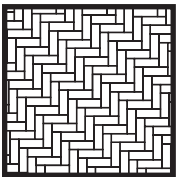
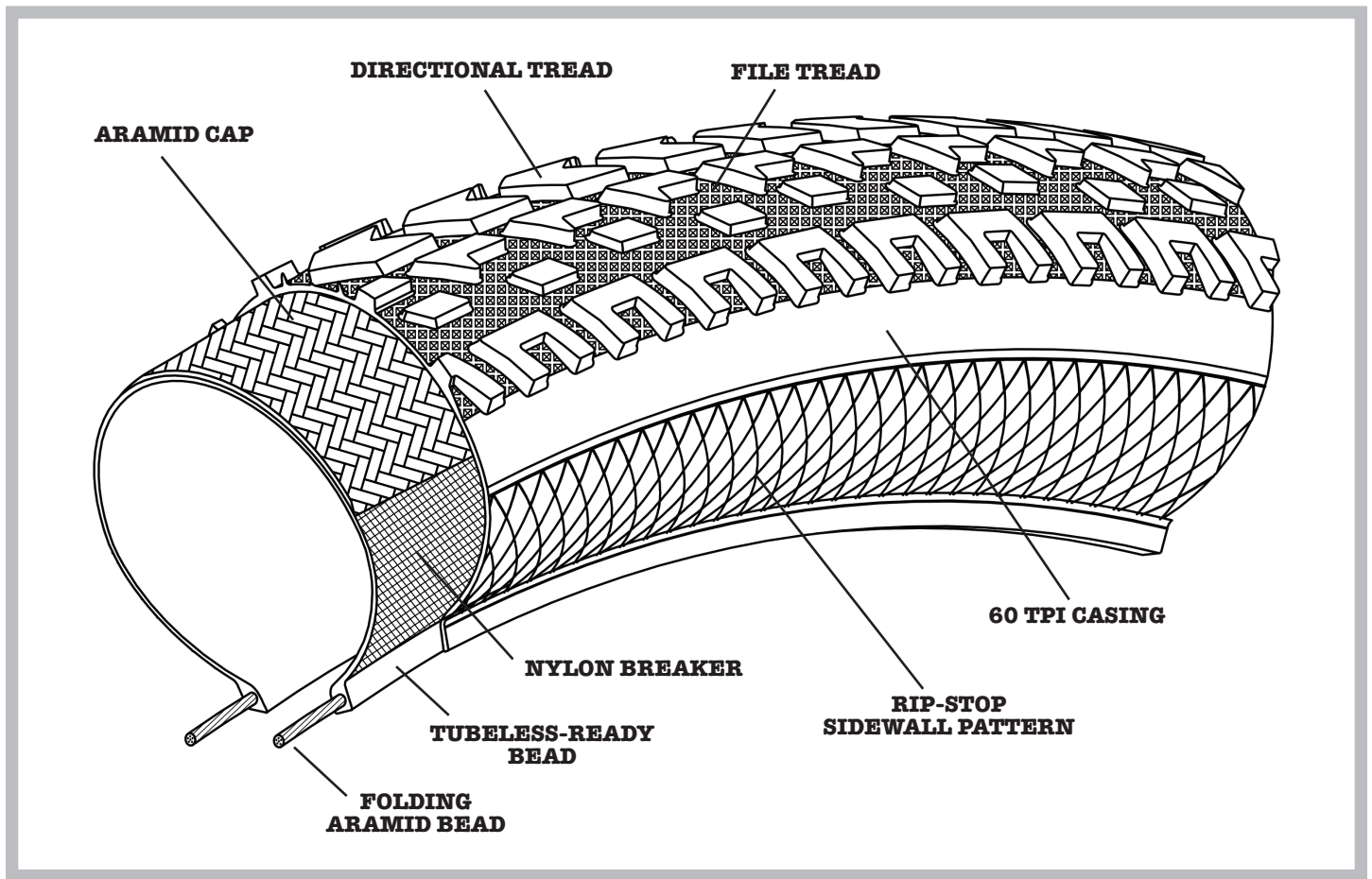


EXTRATERRESTRIAL



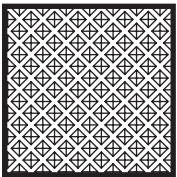
ARAMID CAP

An Aramid cap under the tread provides the reliable puncture protection we all know and love.



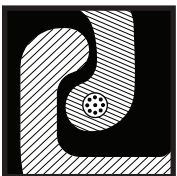
DIRECTIONAL TREAD

Combined with the wide profile of the ET tire, its distinctly directional tread pattern provides plentiful grip and cushion as you wander the earth on your bicycle, no matter the surface.



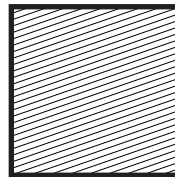
FILE TREAD

File tread located between the main tread blocks provides yet more flat protection.



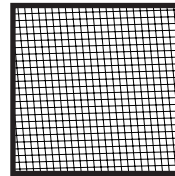
TUBELESS READY BEAD

The bead design of the ET tire is intended to interface like a champ with both Surly and Whisky rims for tubeless applications.



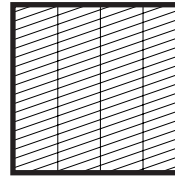
FOLDING ARAMID BEAD

Folding Aramid bead keeps the weight down and the durability high for touring applications.



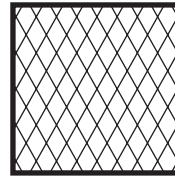
NYLON BREAKER

There is a nylon breaker in the sidewall to break the will of any object that may try to cramp your style and slice your tire.



60 TPI CASING

Not so supple it isn't durable and not so durable it isn't supple; the 60tpi casing is truly the sweet spot of tire casings.



RIP-STOP SIDEWALL PATTERN

The ET tire uses what amounts to a rip-stop pattern that helps to keep cuts from getting any larger when they do happen. This means you'll be fixing a much smaller gash in your sidewall if you do happen to run over a sword lying on the side of the road